



Thinking about university?

A guide for New Zealand students, parents and whānau



2018/2019





Nau mai piki mai tāuti mai

Welcome to 'Thinking about University? A guide for NZ students'.

This guide is to support students and their whānau when thinking about studying at one of New Zealand's eight universities. It is a starting point to help you plan how to successfully move into university life.

Once you've read this guide you will be able to visit each university website for more detailed information.

This guide has been collated by Universities New Zealand on behalf of the eight universities. For more information visit

[**universitiesnz.ac.nz**](https://universitiesnz.ac.nz)

or contact us at
[**Studentguide@universitiesnz.ac.nz**](mailto:Studentguide@universitiesnz.ac.nz)

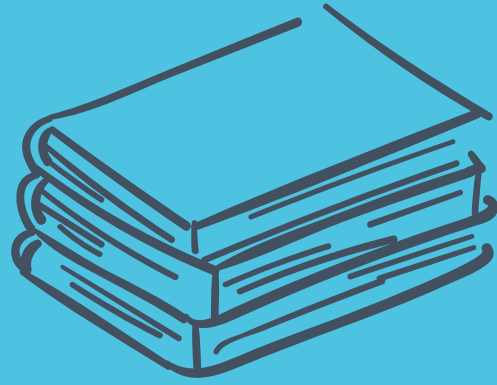
Information for international students is on our website at

[**universitiesnz.ac.nz/
international-students**](https://universitiesnz.ac.nz/international-students)

Disclaimer – Although every effort has been made to ensure accuracy, it is recommended you check university websites for the latest information.

Universities New Zealand – Te Pōkai Tara is the representative body for New Zealand's eight universities.

August 2018



Section	Page
1 _____Welcome	2
2 _____Why a university education?	4
3 _____Choosing a university	6
4 _____Introducing New Zealand's universities	8
5 _____What to study and where?	26
6 _____Semester dates 2019	50
7 _____Get ready checklist!	52
8 _____Get in!	56
9 _____Get sorted!	62
10 _____Get more experience!	68
11 _____Student life: a typical day!	70
12 _____Glossary	72

Why a university education?

He aha e ako ai ki te whare wānanga?

Think of a university education as an investment. It opens more options and opportunities for your future. We know that graduates from universities are happier, healthier and earn more.



University is also an opportunity for you to

ENGAGE

Me aro

With leading teachers and researchers from a top 3% world-ranked university

Through internships and work placements with employers and industry



DEVELOP

Me tipu

Specialist knowledge. Critical thinking, research and analytical skills. Communication, interpersonal, and information technology skills.

CONNECT

Me hono

ENHANCE

Me whakapakari

Cultural understanding, global awareness and community involvement

DISCOVER

Me whakahura

Student life – student groups, clubs, activities

EXPERIENCE & EXPLORE

Me rongō, me rapa

Study abroad and international student exchange programmes

Choosing a university

Ko tēhea te whare wānanga mōu?

A little planning will help you make the most of the opportunities at university.

All eight New Zealand universities are ranked in the top 3% in the world and offer quality tertiary education and student support – so they're all good options!

Some things you may want to consider:

- What are my interests and strengths? What do I love doing? What are my future goals?
- Which universities offer what I want to study?
- Where is the campus located? Is it in a city, out of town or close to home?
- What is the student population?
- What is the vibe of the university?
- Does the university have all the facilities I'd want?
- Is there university accommodation – Halls of Residence?
- What student support services are available?



A university is a community, offering a range of support services and facilities on campus to enable you to achieve at your best, and to keep you motivated while you're on your study journey. Even if you are considering studying by distance, you still have access to a range of support services.

Facilities & services

- | | | | | | |
|---|----------------------------------|----|------------------------------------|----|-----------------------------------|
| 1 | Chaplaincy | 9 | Disabilities services | 16 | Fees and Finance |
| 2 | Medical Centre | 10 | Book shops | 17 | Scholarships |
| 3 | Sport and Recreation | 11 | Cafes and shops | 18 | Māori Student Academic Support |
| 4 | Marae | 12 | Accommodation / Halls of Residence | 19 | Pasifika Student Academic Support |
| 5 | Careers Centre | 13 | Student Clubs | 20 | Student Wellbeing |
| 6 | Student Union / student advocacy | 14 | Academic and Learning Support | 21 | Library |
| 7 | Child Care | 15 | Admission and Enrolment | 22 | Health Services |
| 8 | Counselling | | | 23 | Student Job Search |

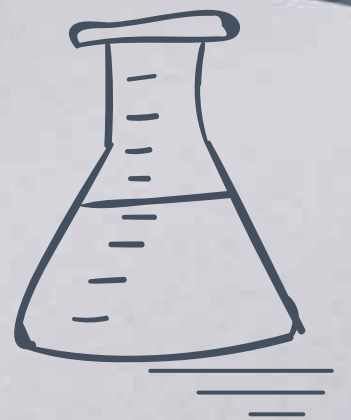


Introducing New Zealand universities

Nei ngā whare
wānanga o
te motu

New Zealand's eight universities offer a wide range of study opportunities and all are ranked within the world's top 500 (3%).

Studying at a university develops not only your professional skills but also important life skills such as analysis, critical thinking, communication and innovation. You will take these through your whole career, not just your first job.





Te Whare Wānanga o Tāmaki Makaurau University of Auckland

New Zealand's leading university

Main campus: City Campus, Auckland

Other campuses: Tāmaki Innovation Campus,
St Johns; Newmarket Campus; Epsom Campus;
Grafton Campus; Manukau

Tai Tokerau Campus: Whangarei

The University of Auckland is ranked as New Zealand's leading university with degrees that are world-class and internationally recognised. Auckland's research-led programmes attract a high level of teaching professionals. You will learn from people who are passionate about their chosen fields.

Faculties

Arts

Business School

Creative Arts and Industries

Education and Social Work

Engineering

Law

Medical and Health Sciences

Science

Auckland Bioengineering Institute

Liggins Institute

Student population

Total (EFTS)	33,366
Total (Students)	42,302
Pre-degree*	940
Undergraduate*	25,800
Postgraduate*	16,700
Domestic	34,876
International	7,426
Māori	3,116
Pasifika	3,620
Part-time	15,587
Full-time	26,632

*2017 data. Source for table: Education Counts, Tertiary Statistics/Participation.

0800 61 62 63 | auckland.ac.nz



UniofAkl



University of Auckland



snapuoa



AucklandUni



universityofauckland



UNIoFAUCKLAND

Ākonga Māori

Tū ake i te kei o te waka mātauranga. Tū ake nei i Te Whare Wānanga o Tāmaki Makaurau. Nau mai, haere mai

Waipapa Marae (City campus) and Tutahi Tonu Marae (Epsom Campus) provide a home away from home for taira Māori and their whānau.

The Equity Office's Kaitakawaenga Māori provides information and support to taira and their whānau including advice on entry, enrolment, scholarships and financial opportunities, as well as pastoral guidance.

Tuākana is the university-wide learning community for enhancing the success of taira Māori, offering study wānanga, whakawhanaungatanga and workshops.

Ngā Taira Māori is the Māori student association located at the University of Auckland. They are responsible for advocating better conditions for taira Māori on campus.

WEBSITE KEY WORD SEARCH: Māori, Tuākana
www.auckland.ac.nz/maoristudents



Pasifika students

Talofa lava, Malo e lelei, Kia orana, Bula vinaka, Fakatalofa atu, Fakaalofa lahi atu, Halo oloketa, Ia orana, Mauri, Aloha, Malo ni, Hafa adai.

Our Fale Pasifika is the centre of the university Pacific community.

The Equity Office's Pacific Equity Adviser provides a range of student support services including guidance with entry, enrolment and scholarship opportunities.

Tuākana is the university-wide learning community for enhancing the success of Pacific students offering fonotaga, and workshops.

WEBSITE KEY WORD SEARCH: Pacific, Tuākana
www.auckland.ac.nz/pacificstudents





Te Wānanga Aronui o Tāmaki Makau Rau

Auckland University of Technology

The University for the Changing World

Main campus: Auckland

Other campuses: North Shore campus;
Manukau campus

The University reflects the changing world, and emerging environments and industries. Established relationships with employers make teaching and research relevant to current and future industry, which shows in the University's 95% graduate employment rate.

Faculties

Business, Economics and Law

Culture and Society

Design and Creative Technologies

Health and Environmental Sciences

Māori and Indigenous Development

Student population

Total (EFTS)	19,716
Total (Students)	28,812
Pre-degree*	2,170
Undergraduate*	18,640
Postgraduate*	6,895
Domestic	21,636
International	7,176
Māori	2,375
Pasifika	3,415
Part-time ⁺	6,765
Full-time ⁺	15,135

*2017 data. Source for table: Education Counts, Tertiary Statistics/Participation.

⁺Domestic students only

0800 288 864 | aut.ac.nz



autuni



AUT



AUTUniversity



autuni



autuni

Ākongā Māori

E te hunga pikoko ki te mātauranga, nau mai piki mai ki te Wānanga Aronui o Tāmaki-makau-rau.

Ngā Wai o Horotiu Marae is located at the city campus. It serves as a whānau, cultural and spiritual centre.

There are programmes and activities across the university that are dedicated to taura Māori achievement and success.

The Māori Liaison Services can help with; advice (academic, cultural or personal), financial (scholarships and administration), advocacy (faculty and community), and mentors.

Titahi Ki Tua (TKT) offers Māori AUT students a place where they can come together to share ideas, share identity, draw support, socialise, meet other taura Māori and practice culture – kapa haka, all in a marae environment.

WEBSITE KEY WORD SEARCH: Māori, Māori Student Support
www.aut.ac.nz/community/maori



Pasifika students

Warm Pacific greetings!

AUT offers comprehensive support for our diverse Pacific communities.

Our Student Hub is always a good place to start if you are looking for support and advice with your studies, health, welfare and anything else on living and studying in New Zealand.

Our Office of Pacific Advancement oversees a range of Pacific-focused student engagement activities. Through our Oceanian Leadership Network you can access initiatives that focus on leadership development, academic, cultural and social support.

WEBSITE KEY WORD SEARCH: Pacific, Pacific Support
www.aut.ac.nz/community/pasifika



THE UNIVERSITY OF
WAIKATO
Te Whare Wānanga o Waikato

Te Whare Wānanga o Waikato

University of Waikato

Ko Te Tangata, For the People

Main campus: Hamilton

Other campus: Tauranga

The University of Waikato is a true reflection of New Zealand culture; we are ambitious, innovative thinkers who let nothing get in the way of achieving big dreams. We provide a world-leading education in a supportive environment.

Faculties

Arts and Social Sciences

Computing and Mathematical Sciences

Education

Health, Sport and Human Performance

Science and Engineering

Law

Māori and Indigenous Studies

Waikato Management School

Student population

Total (EFTS)	9,892
Total (Students)	12,229
Pre-degree*	875
Undergraduate*	8,155
Postgraduate*	4,220
Domestic	8,293
International	1,599
Māori	2,344
Pasifika	616
Part-time* [†]	3,040
Full-time* [†]	7,310

*2017 data. Source for table: Education Counts, Tertiary Statistics/Participation.

[†]Domestic students only

0800 924 528 | waikato.ac.nz



Ākonga Māori

Māori distinctiveness at Te Whare Wānanga o Waikato is an integral part of the student experience for all students on campus. From the new student pōwhiri to an official graduation on the marae, there are events in which all students can participate.

Māori students currently make up 23% of our student population, the highest of any other university, which means our students are highly visible around campus. There are Māori initiatives available to support Māori students at all levels of study which include Faculty and Tauranga based Māori Mentors, a student leadership programme and graduate support. Our Māori student groups are also active across campus leading events which further promote whanaungatanga between new and returning students.

Waikato is also the only university which offers a full immersion te reo course (Te Tohu Paetahi) and the programme has paved the way for the revitalisation of te reo Māori for more than 25 years.

With Māori academic excellence across the disciplines and support structures to help you achieve, nau mai, haere mai ki Te Whare Wānanga o Waikato.

WEBSITE KEY WORD SEARCH: Māori, Te Puna Tautoko
www.waikato.ac.nz/maori/

Pasifika students

Talofa lava, Malo e lelei, Kia orana, Bula vinaka, Fakaalofa lahi atu, Fakatalofa atu, Namaste, Talohi ni, Halo ola keta, Malo ni, Mauri, Halo Olaketa, Aloha kakou and warm Pacific greetings to all.

Waikato offers a diverse and supportive network of student services. We are committed to enhancing Pacific student success, and providing an enjoyable and supportive student experience.

The 'Conch' is a dedicated space to enhance the educational aspirations of Pacific students while supporting their cultural uniqueness. It is available for Fono, seminars and workshops, social gatherings and community events.

WEBSITE KEY WORD SEARCH: Pacific, Student Services
www.waikato.ac.nz/students/pacific-support/





Te Kunenga ki Pūrehuroa Massey University

New Zealand's Defining University

Main campus: Manawatū (Palmerston North)

Other campuses: Auckland and Wellington

The University has award-winning teachers, well-connected lecturers and world-renowned researchers. Add this to our committed support staff and you have the best learning environment to help you move towards your future.

Colleges

Creative Arts

Health

Humanities and Social Sciences

Sciences

Massey Business School

Student population

Total (EFTS)	18,653
Total (Students)	30,883
Pre-degree*	2,595
Undergraduate*	17,920
Postgraduate*	11,715
Domestic	2,791
International	5,092
Māori	3,186
Pasifika	1,479
Part-time	19,053
Full-time	11,830

*2017 data. Source for table: Education Counts, Tertiary Statistics/Participation.

0800 627 739 | massey.ac.nz



Ākonga Māori

Piki mai, kake mai, nau mai, haere mai ki Te Kunenga Ki Pūrehuroa

Massey University's Tiriti-led strategy has sparked a new focus on supporting taura Māori achievement. This includes Te Rau Tauawhi, the Māori Student Centre, with a team dedicated to helping taura navigate University life and succeed.

Te Pūtahi-a-Toi, the School of Māori Knowledge is the cultural heart of the Manawatū campus, while the Pukeahu Marae development project will provide an exciting cultural and learning space at the Wellington campus.

Taura Māori are also supported by Māori Student Associations on each campus and Māori student recruitment advisors are available to help with enrolment and career advice.

Te Rau Puawai Workforce Programme provides bursaries and incredibly successful learning support for students in the field of Māori mental health.

The Pūhoro Māori STEM Academy is located at both the Manawatū and Auckland campuses. The programme is designed to guide secondary school students through NCEA, and prepare them for tertiary study across the fields of science, technology, engineering and mathematics.

To find out what Massey – Te Kunenga Ki Pūrehuroa - has to offer Māori students visit www.massey.ac.nz/maori

WEBSITE KEY WORD SEARCH: Māori, Māori student advisors, Pūhoro
www.massey.ac.nz/maori



Pasifika students

Kia orana, Ni sa bula Vinaka, Fakaalofa lahi atu, Talofa lava, Mālō ni, Malo e lelei, Fakatalofa atu.

Massey University has a range of support services available for Pasifika students and a Pasifika Directorate dedicated to growing the participation and success of Pasifika students at all levels of study.

Pasifika advisors based on each campus can help with academic and study advice along with pastoral care.

Each campus has a fale space for Pasifika students to study and gather, and Pasifika Student Associations provide cultural connection and fellowship.

Pasifika recruitment advisors are also available to offer course and enrolment advice.

WEBSITE KEY WORD SEARCH: Pasifika Students www.massey.ac.nz/massey/students/pasifika



Te Whare Wānanga o Te Ūpoko o te Ika a Māui Victoria University of Wellington

Capital Thinking. Globally minded.

Main campus: Wellington

Victoria University of Wellington draws on its capital city location to carry out world-class research, teaching and to make connections here and around the world. It is proud of its inclusive, diverse and vibrant community and is committed to providing a student experience that is second to none.

Faculties

Architecture and Design

Education

Engineering

Health

Humanities and Social Sciences

Law

Science

Victoria Business School

Student population

Total (EFTS)	17,458
Total (Students)	22,273
Pre-degree*	680
Undergraduate*	16,210
Postgraduate*	5,820
Domestic	18,880
International	3,360
Māori	2,185
Pasifika	1,330
Part-time	7,548
Full-time	14,725

*2017 data. Source for table: Education Counts, Tertiary Statistics/Participation.

0800 VICTORIA (0800 842 867) | victoria.ac.nz



E nga tauira Māori

Nau mai, haere mai ki te Whare Wānanga o Te Ūpoko o te Ika a Māui.

Te Herenga Waka Marae is on the Kelburn campus. It provides a tūrangawaewae for tauira and staff.

Support services for tauira include; Māori mentoring programmes, Study Wānanga, Māori Learning Advisors and study skills workshops.

Te Pūtahi Atawhai offers an academic mentoring programme for Commerce, Humanities and Social Sciences, Education and New Zealand School of Music – Te Kōkī tauira.

Te Rōpū Āwhina is the on-campus whanau support for tauira Māori within the Faculties of Science, Engineering, Architecture and Design.

Ngāi Tauira – the Māori students' association – represents the interests of tauira Māori studying at Victoria University of Wellington.

WEBSITE KEY WORD SEARCH: Māori, Te Pūtahi Atawhai, Te Rōpū Āwhina

www.victoria.ac.nz/maori-at-victoria



Pasifika students

Talofa lava, Kia orana, Mālō e lelei, Ni sa bula vinaka, Faka'alofo lahi atu, Fakatalofa atu, Kam na mauri, Gud de tru, Kaselehlie, Halo olgeta, Ia orana, Aloha mai e and warm Pacific Greetings.

Victoria University of Wellington has a university-wide commitment, and a Pasifika Student Success Plan, to raising Pasifika participation and academic success.

It provides a wide range of Pasifika student support services to ensure a successful university experience for all students.

The Pasifika Liaison Officer can assist you and your family with course planning, entrance and admission information and any questions about study.

WEBSITE KEY WORD SEARCH: Pasifika

www.victoria.ac.nz/vicpasifika



Te Whare Wānanga o Waitaha

University of Canterbury

**Be prepared to change the world.
Tangata Tū, Tangata Ora**

Main campus: Ōtautahi Christchurch

One of the top universities in New Zealand, the University of Canterbury Te Whare Wānanga o Waitaha has gained an international reputation for academic excellence in teaching and research. The University's undergraduate and postgraduate programmes are recognised worldwide.

Colleges

Arts | Te Rāngai Toi Tangata

Business and Law | Te Rāngai Umanga me te Ture

Engineering | Te Rāngai Pūkaha

Education, Health and Human Development | Te Rāngai Ako me te Hauora

Science | Te Rāngai Pūtaiao

Student population

Total (EFTS)	13,089
Total (Students)	16,253
Pre-degree*	440
Undergraduate*	8,810
Postgraduate*	7,205
Domestic	13,320
International	2,590
Māori*	1,200
Pasifika*	475
Part-time* ⁺	3,145
Full-time* ⁺	10,175

*2017 data. Source for table: Education Counts, Tertiary Statistics/Participation.

⁺Domestic students only

0800 827 748 | canterbury.ac.nz



Ākonga Māori

Nau mai, haere mai ki te Whare Wānanga o Waitaha

Te Whare Ākonga o Te Akatoki is a space where ākonga Māori can study, relax and meet other ākonga Māori.

A range of ākonga Māori support services offered through the Māori Student Development Team (MDT) Te Ratonga Ākonga Māori at UC – UC Māori Orientation, Te Hui Whakanui | Celebration of Māori graduates, the Tuākana-Tāina and Te Punenga mentoring and academic support programmes.

Te Whare Ākonga o Te Akatoki (The Whare) is a dedicated study space for ākonga Māori. The whare has many facilities including a kitchen, showers, computers and rooms that can be booked for study sessions when required. This is a great space to meet other ākonga Māori, relax and study.

Te Akatoki Māori Students' Association (TA) also offer many social activities including whānau days, Pō whakangahau, kapa haka and more.

WEBSITE KEY WORD SEARCH: Māori, Tuākana Tāina, Punenga

www.canterbury.ac.nz/support/akonga-maori/



Pasifika students

Talofa lava, Malo e lelei, Kia orana, Ni sa bula vinaka, Halo olaketa, Namaste, Kam na mauri, Fakaalofa lahi atu, la orana, Mahalo, Malo ni, Kia ora and warm Pasifika greetings.

Pasifika support services have been designed to ensure that Pasifika students get the most out of their studies.

The Pacific Development Team offer pastoral care and support to Pasifika students and provide one-to-one peer support to Pasifika students in their first year of study through a mentoring programme. Additional support is offered through the PASS (Pacific Academic Solutions and Success) programmes.

There are dedicated Pasifika spaces onsite such as the Pasifika Student Fale (House) which provides a space for small Pasifika student gatherings and tutorials, and our Pasifika common room on the Dovedale campus

Pasifika Events such as Get Fresh, PASS Learning Skill's, Pasifika Welcome Day, Jandals and Pasifika Graduation celebrations all help our students connect and build a healthy sense of belonging as a valued part of the wider University community.

WEBSITE KEY WORD SEARCH: Pacific
www.canterbury.ac.nz/support/pasifika/



Te Whare Wānaka o Aoraki Lincoln University

A place to grow.

Main campus: Lincoln

At Lincoln University, helping our students grow is what we are all about. And we encourage them to do it their way, with diverse learning that fits their ambitions in an environment that allows them to flourish. We have a 138-year history of land-based teaching and that's where our future lies. Our areas of specialisation reflect this: Agriculture, Horticulture and Viticulture, Business, Science, Environment, Landscape architecture, Tourism, Sport and Recreation, Property and Valuation, and Food, Wine & Beer. We offer a degree that works, collaboration with industry, and the benefits of being small—a more personal learning environment.

Faculties

Agribusiness and Commerce

Agriculture and Life Sciences

Environment, Society and Design

Student population

Total (EFTS)	2,695
Total (Students)	4,567
Pre-degree*	2,282
Undergraduate*	1,577
Postgraduate*	779
Domestic	3,319
International	1,252
Māori	320
Pasifika	60
Part-time	2,583
Full-time	1,984

*2017 data. Source for table: Education Counts, Tertiary Statistics/Participation.

0800 10 60 10 | lincoln.ac.nz



Ākongā Māori

Nau mai ki te Whare Wānaka o Aotearoa

Māori students at Lincoln will gain an excellent qualification in a fun, friendly and supportive environment.

There are a range of support services for Māori students including Academic and Learning support.

Te Awhioraki is an organisation that represents all Māori students on-campus.

WEBSITE KEY WORD SEARCH: Māori Students

www.lincoln.ac.nz/Future-Students/Maori-Students/



Pasifika students

Kia Orana, Talofa Lava, Kia Ora, Malo e lelei, Nisa Bula
Vinaka, Fakaalofa Lahi Atu, Taloha ni, Fakatalofa atu, Halo oloketa.

Lincoln University has a longstanding association with the Pacific region and its communities and aims to contribute to the educational and economic aspirations of Pacific people both within New Zealand and in the wider Pacific region.

There are a range of support services both academic and pastoral are located on campus.

WEBSITE KEY WORD SEARCH: Pasifika

www.lincoln.ac.nz/Lincoln-Home/Future-Students/Pasifika-Students/





Te Whare Wānanga o Otāgo

University of Otago

**'Only Otago' for Academic Excellence
and Outstanding Experience.**

Main campus: Dunedin

Otago's specific research strengths are in the medical, biomedical, biological and natural sciences, the liberal arts, and law. Otago's outstanding academic reputation, strong research culture, and vibrant campus lifestyle attract highly-talented students from all over New Zealand and overseas.

Faculties

Health Sciences

Humanities

Sciences

Otago Business School

Student population

Total (EFTS)	18,457
Total (Students)	20,950
Pre-degree*	1,828
Undergraduate*	14,448
Postgraduate*	5,133
Domestic	17,890
International	3,065
Māori	1,945
Pasifika	935
Part-time* ⁺	3,170
Full-time* ⁺	14,720

*2017 data. Source for table: Education Counts, Tertiary Statistics/Participation.

⁺Domestic students only

0800 80 80 98 | otago.ac.nz

[otagouniversity](https://www.facebook.com/otagouniversity) [University of Otago](https://www.linkedin.com/company/university-of-otago) [OtagoUniversity](https://www.youtube.com/OtagoUniversity)

[otago](https://twitter.com/otago) [universityofotago](https://www.instagram.com/universityofotago)

Ākonga Māori

Nau mai, haere mai, ki Te Whare Wānanga o Otāgo

Otago taura Māori and their whānau have access to a wide range of support services, as well as scholarships and a dedicated School of Māori, Pacific and Indigenous Studies: Te Tumu.

The Māori centre – Te Huka Mātauraka offers a home away from home for taura Māori, from pre-enrolment, Turāka Hou – Māori Orientation – through to pre-graduation celebrations, graduation and beyond.

Te Rōpū Māori o Te Whare Wānanga o Otago is the Māori Students' Association.

WEBSITE KEY WORD SEARCH: Māori, Māori Centre
www.otago.ac.nz/services/maori.html

Pasifika students

Kia Orana, Talofa Lava, Kia Ora, Malo e lelei, Nisa Bula Vinaka, Fakaalofa Lahi Atu, Taloha ni, Fakatalofa atu, Halo oloketa, Mauri, Fakatalofa atu.

The Pacific Island Centre, Te Pokapū mā kā ākoka o kā Mouutere o Te Moana Nui a Kiwa supports Pacific students, their families and communities at Otago University.

The centre offers Academic Mentoring through the Taimane programme, and can offer tutorial sessions. Supervised study nights are also held.

WEBSITE KEY WORD SEARCH: Pacific, Pacific Students
www.otago.ac.nz/pacific/index.html



What to study and where?

Ka ako i te aha,
ka ako ki hea?

Universities offer a wide range of subjects to study at undergraduate level. The main undergraduate qualification is called a Bachelor's degree and the subject you choose to specialise in is called your major.

We've put together a list of degrees and the majors offered at each of New Zealand's eight universities to help you decide what to do and where to go.



Qualifications

Ngā Tohu

University preparation programmes (NZQF Levels 4/5)

All universities have Foundation pathways for students who need further English language, academic and study skills preparation prior to undertaking undergraduate study. Foundation programmes generally run for up to one year of full-time study.

Bachelor's degree (NZQF level 7)

Is normally three years in duration (full-time) and consists of a prescribed number of papers or courses. Typically, a Bachelor's degree offers a great deal of flexibility, and the opportunity for students to choose a programme that is appropriate for them.

Bachelor's degree with honours (NZQF level 8)

Is a one-year programme of study following a Bachelor's degree or an integrated four-year programme, requiring more specialised study in the chosen major subject and frequently involving some independent research or investigation.

Graduate diploma / Graduate certificate (NZQF level 7)

Is a one-year (full-time) course of study for graduates. Prior learning or experience in the subject matter of the diploma is not always required, giving graduates an opportunity to add a qualification in a different major subject to that of their first degree. A Graduate diploma may also be used as a bridging qualification to specialist postgraduate study.

A Graduate certificate is a half-year (full-time) course of study.

Postgraduate diploma / Postgraduate certificate (NZQF level 8)

A Postgraduate diploma is a one-year (full-time) course of study that builds on the same subject matter in the academic field of a relevant Bachelor's degree.

A Postgraduate certificate is a half-year (full-time) course of study.

Masters' degree (NZQF Level 9)

Is open to those who have completed a Bachelor's degree with good grades, and comprises 1–2 years of advanced study in the student's major discipline.

NZQF LEVEL QUALIFICATION TYPE

1-4	Certificates
5-6	Diplomas
7	Bachelor's degrees Graduate diplomas and certificates
8	Postgraduate diplomas and certificates Bachelor's degrees with honours
9	Master's degrees
10	Doctorates

Doctorate (NZQF level 10)

A doctorate is normally the highest academic qualification available within a university. The main doctorate is the PhD (Doctor of Philosophy). This degree can be taken in any one of the wide range of subjects and involves original and sustained research under academic supervision. A PhD usually takes at least three years of full-time study.

Conjoint degrees

A specialised programme of study that enables a student to complete two Bachelor's degrees in a shortened time.

Our 'What to study and where?' guide is designed so you can see all the majors on offer, under the various Bachelor's qualifications.



Bachelor's degrees

Qualification	Major	The University of Auckland	Auckland University of Technology	The University of Waikato	Massey University	Victoria University of Wellington	The University of Canterbury	Lincoln University	The University of Otago
Bachelor of Commerce	Operations and Supply Chain Management	Yes					Yes		
Bachelor of Commerce	Philosophy, Politics and Economics								Yes
Bachelor of Commerce	Public Policy					Yes			
Bachelor of Commerce	Strategy and Entrepreneurship						Yes		
Bachelor of Commerce	Supply Chain Management							Yes	
Bachelor of Commerce	Taxation	Yes				Yes			
Bachelor of Commerce	Taxation and Accounting						Yes		
Bachelor of Commerce	Tourism								Yes
Bachelor of Commerce	Tourism Management					Yes			
Bachelor of Commerce (Agriculture and Professional Accounting)	Agriculture and Professional Accounting							Yes	
Bachelor of Commerce (Agriculture)	Agriculture							Yes	
Bachelor of Commercial Music	Commercial Music				Yes				
Bachelor of Communication / Communication Studies	Advertising Creativity		Yes						
Bachelor of Communication / Communication Studies	Communication Management				Yes				
Bachelor of Communication / Communication Studies	Communication Strategy and Practice					Yes			
Bachelor of Communication / Communication Studies	Creative Industries		Yes						
Bachelor of Communication / Communication Studies	Digital Media		Yes						
Bachelor of Communication / Communication Studies	Expressive Arts				Yes				
Bachelor of Communication / Communication Studies	International Languages				Yes				
Bachelor of Communication / Communication Studies	Journalism		Yes		Yes		Yes		
Bachelor of Communication / Communication Studies	Leadership Communication			Yes					
Bachelor of Communication / Communication Studies	Linguistics				Yes				
Bachelor of Communication / Communication Studies	Marketing			Yes					
Bachelor of Communication / Communication Studies	Marketing Communication				Yes				
Bachelor of Communication / Communication Studies	Media Studies				Yes				

Semester

Week Starting	The University of Auckland	Auckland University of Technology	The University of Waikato	Massey University	Victoria University of Wellington	The University of Canterbury	Lincoln University	The University of Otago
1 31.12.18			Summer school from 3 Jan	Summer school from 3 Jan				
2 7.01.19	Summer school	Summer school			Summer school Trimester 3 continues	Summer school from 3 Jan	Summer school from 8 Jan	Summer school from 7 Jan
3 14.01.19								
4 21.01.19								
5 28.01.19								
6 4.02.19								
7 11.02.19			Examinations (3-17 Feb)	Examinations (11-16Feb)			Examinations (11-12 Feb)	Examinations (16-21 Feb)
8 18.02.19	Examinations (18-20 Feb)		Enrolment	Enrolment	Examinations (18-23 Feb)	Semester One begins	Semester One begins	
9 25.02.19		Semester One begins	Semester A begins	Semester One begins	Enrolment completion			Semester One begins
10 4.03.19	Semester One begins				Trimester One begins			
11 11.03.19								
12 18.03.19								
13 25.03.19								
14 1.04.19								
15 8.04.19				Mid-Semester Break (Easter)		Mid-Semester Break (Easter)	Mid-Semester Break (Easter)	
16 15.04.19	Mid-Semester Break (Easter)	Mid-Semester Break (Easter)	Mid-Semester Break (Easter)	12-26 April	Mid-Trimester Break (Easter)	8-26 April	8-26 April	Mid-Semester Break (Easter)
17 22.04.19	15-27 April	15-27 April	15-27 April		15-28 April			19-28 April
18 29.04.19								
19 6.05.19								
20 13.05.19								
21 20.06.19								
22 27.05.19								
23 03.06.19	Study Break 8-12 June	Study Break 3-7 June	Study Break 3-7 June	Study Break 4-7 June		Study Break 4-7 June	Study Break 4-7 June	Examinations 5-19 June
24 10.06.19	Examinations	Examinations	Examinations	Examinations	Study Break 10-14 June	Examinations	Examinations	
25 17.06.19	13 June - 1 July	10-21 June	10-21 June	10-22 June	Examinations	10-22 June	10-21 June	
26 26.06.19		Mid-Year Break	Mid-Year Break	Mid-Year Break	14-29 June	Mid-Year Break	Mid-Year Break	20 June-7 July

Get ready!

Me whakarite koe

Deciding to go to university may seem a little overwhelming for you (and your whānau!) so we have put together a timeline and prepared some information you may find useful to help get your studies off to a great start.



Get started

Key contacts:

School Career Advisers

- Check the Careers NZ website
- Attend Career Expos in your area

CareersNZ: <https://www.careers.govt.nz/>

JAN

FEB

MAR

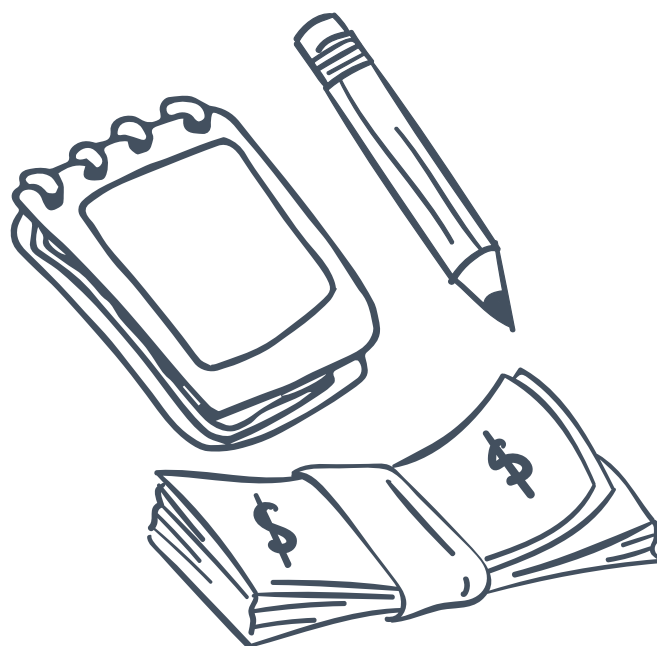
APR

Get connected

Key contacts:

University Liaison or Recruitment Officers

- Attend a university visit at your school
- Go to a university Open Day—take a university tour, experience a university lecture, talk with students taking courses to hear about their experiences
- Check out a university prospectus
- Universities have lots of supporting guides as well:
 - information for parents
 - accommodation guides
 - Māori student guides
 - Pacific student guides
 - budgeting and financial planning



Get planning

Key contacts: University Admissions Office

- Make sure you are on track to get University Entrance (UE). If you are unsure talk to your school.
- Not doing NCEA? See the Admissions section for more information on other pathways into university.
- Check the universities' application deadlines (some programmes have earlier closing dates than others).

MAY

Get advice

Key contacts: Student Course Advisers & Finance Advisers

Study related:

Course advisers can help you plan your study year!

Contact the university if you'd like help to:

- choose your course
- choose your qualification
- complete your Application to Enrol
- plan your timetable

Money matters:

- Jobs, scholarships, budgeting advice, living expenses – get advice on money matters.
- Think about living expenses.
- See what support your Student Union offers.
- Budget guides are available at each university.

JUN

Get applying

Key contacts: University Admissions Office

- Check (and double-check) the entry requirements for the courses you're applying for. Some courses have specific requirements in addition to UE.
- Go to our 'Get in' section for more details on what you'll need when applying.

JUL

Get a room

Key contacts: Accommodation & Halls of Residence

- Take a tour of the facilities.
- Check the application deadlines.
- See the Halls of Residence section.

AUG

Many scholarships for school leavers are based on Year 12 results.

Get a scholarship

Key contacts: University Scholarships Office

Universities and other organisations offer a wide-range of scholarships for university study.

There are scholarships to support:

- Academic achievement
- Māori students, Pasifika students, students with Disabilities, Financial hardship
- Sport and Cultural achievement
- Subject-specific scholarships
- School Leaver scholarships

Generosity www.generosity.org.nz/

Māori Education Trust maorieducation.org.nz/undergraduate-scholarships-for-maori/

Universities NZ undergraduate scholarships
<https://www.universitiesnz.ac.nz/scholarships>



Get in: Admission to university

Te whakauru mai

How do I get into university? There are a range of different pathways into university. If you need further support, contact the university.



HARMAN: THE LOST REVOLUTION GERMANY 1919-1927



University Entrance through NCEA

University Entrance (UE) is the minimum standard for entrance to a New Zealand university.

To qualify you will need:

NCEA Level 3

Three subjects – at Level 3, made up of:

- 14 credits each, in three approved subjects

Literacy - 10 credits at Level 2 or above, made up of:

- 5 credits in reading
- 5 credits in writing

Numeracy - 10 credits at Level 1 or above, made up of:

- achievement standards—specified achievement standards available through a range of subjects, or
- unit standards—package of three numeracy unit standards (26623, 26626, 2662—all three required).

Check out the 'Other Admission Pathways' if you've missed out on University Entrance.

For more information on University Entrance, go to NZQA's website www.nzqa.govt.nz/ncea

Te Marautanga o Aotearoa

The University Entrance standard includes approved subjects and achievement standards from Te Marautanga o Aotearoa. Visit NZQA for more information.

An NCEA Level 3 certificate

14 credits at level 3 in an approved subject

14 credits at level 3 in an approved subject

14 credits at level 3 in an approved subject

Literacy:

10* credits at level 2 or above (5 in reading, 5 in writing)

Numeracy:

10* credits at level 1 or above

*From specified list of standards. See www.nzqa.govt.nz



Other school-leaver qualifications

Universities also accept other school-leaver qualifications for admission to an undergraduate degree:

Cambridge Assessment International Examinations (CAIE)

To be eligible for admission, candidates must achieve the following:

Part A

- a minimum of 120 points on the New Zealand CAIE Tariff (refer table) at A or AS level from any syllabus

groups which are broadly equivalent to those in the list of approved subjects for NCEA, and

- a D grade or better in syllabuses from at least three different syllabus groups (excluding Thinking Skills).

Part B

Literacy and numeracy must be satisfied as follows:

Literacy

EITHER

An E grade or better in any one of AS English Language, Language and Literature in English, Literature in English. A D grade or better will satisfy one of the syllabus requirements of Part A

OR

As prescribed for university entrance with NCEA

NZ CAIE Tariff		
Grade	A level	AS level
A*	140	n/a
A	120	60
B	100	50
C	80	40
D	60	30
E	40	20

Numeracy

EITHER

- (i) A D grade or better in IGCSE or GCSE mathematics, or
- (ii) Any mathematics passed at AS level. A 'D' grade or better will satisfy one of the syllabus requirements of Part A

OR

As prescribed for university entrance with NCEA

International Baccalaureate (IB)

Completion of the Diploma (minimum of 24 points).

An IB Diploma completed with English as Language A1 at either Higher or Standard Level and including any mathematics subject satisfies the literacy and numeracy requirements for university entrance

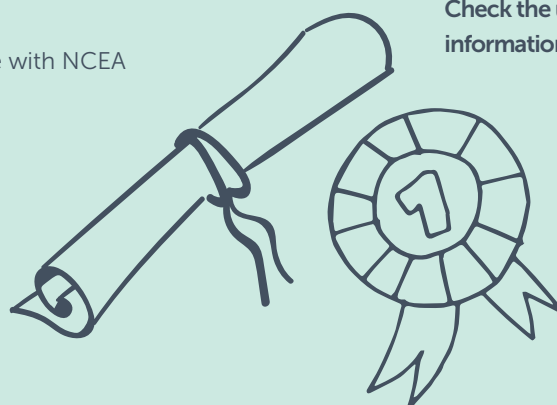
New Zealand Certificate in Steiner Education (Level 3)

A completed Steiner School Certificate Level 3, including 9 points in each of 3 approved subject areas, 7 points in literacy (4 writing/3 reading), and 9 points in numeracy.

Overseas school-leaver qualifications

Universities accept a wide-range of overseas school-leaver qualifications for admission.

Check the university websites for up-to-date information.



Additional entry requirements

- Some courses of study require you to have taken specific NCEA-approved subjects and gained a minimum number of credits.
- Some courses of study require you to have taken specific achievement standards in certain NCEA-approved subjects.
- Some courses of study also have other entry requirements such as a portfolio, audition and/or interview.

Selective entry

- Selective entry might apply to some courses of study, especially for those with limited or competitive entry.

Guaranteed or preferential entry scores

- Some universities use a rank score system for guaranteed or preferential entry into some courses of study, especially for those with limited or competitive entry. The score is based on the number of Level 3 credits you gain with Excellence, Merit or Achieved.
- You may still be accepted into a course of study if you don't meet the rank score but meet the University Entrance standard. Check with the university for the specific details.
- Get the right advice: Check with the university to see if the rank score applies to you and how to calculate your score for that university.

Targeted entry pathways

Some universities have special entry pathways for specific student groups e.g. Māori, Pasifika and students with disabilities.



OTHER ADMISSION PATHWAYS

University preparation courses

Universities and other providers offer University Preparation courses for students without University Entrance or an equivalent qualification.

Check with the university to see which courses they accept as a suitable entry qualification.

If you didn't get University Entrance this may be an option for you! Contact the university to find out more.

Special Admission for students over 20 (without UE)

If you are over 20 years old and a New Zealand or Australian citizen (or permanent resident) and don't have a University Entrance qualification, you can apply for Special Admission.

Check the university websites for Special Admission application deadlines and what you'll need to provide with your application.

Transferring students

If you're transferring from one degree to another you can apply to have the courses you've already completed credited to your new degree.

Discretionary entrance

If you are a New Zealand or Australian citizen (or permanent resident) who hasn't continued secondary education beyond Year 12 you can apply for discretionary entrance based on your Year 12 results.

You'll need to have met certain requirements in your Year 12 results, including a reference from your school principal (or another suitable person) and you may need to do an interview. Discretionary Entrance is only for admission into a specific course of study, not general admission into a university.

Check the university websites for more information.

University Academic Calendars

A university's Academic Calendar contains a record of all the university's regulations, policies and course information for the academic year.

Even if you've started your study, you can move to another institution!

Get sorted – StudyLink, scholarships, accommodation

Me whakarite koe

- Hoto Akoranga
- Karahipi
- Wharepuni



You'll see in the timeline some key things to think about. This section looks at a few of these areas in more detail.

Lots of scholarships are available. Whanāu, encourage your rangatahi to apply.



Scholarships

Karahipi

Scholarships are a smart way to fund your study. Depending on the scholarship, you might need to provide the following supporting documents with your application:

- Personal statement: academic achievements, leadership, sporting, cultural and community achievements and involvement
- Statement about your study plans and ambitions
- List of accomplishments, awards, leadership positions
- Academic results (e.g. NCEA record of achievement)
- References – different scholarship might require different types of references:
 - **Academic reference:** supports your academic achievements and ambitions
 - **Character reference:**
 - supports your personal qualities and non-academic achievements (e.g. leadership, sporting and cultural activities)
 - identify strong referees for each type of reference
 - confirm that they are willing to be contacted for a written reference (these are usually confidential and submitted directly to the scholarship administrators)
 - provide your referee with information about the scholarships you are applying for and the closing dates.

Remember you can apply for as many scholarships as you like, and at multiple universities!

If you are of Māori descent, make sure you check to see if your iwi offers education scholarships.

There are lots of scholarships available. Really encourage your rangatahi to apply.



StudyLink

Hoto Akoranga

It's important that you work out how you are going to fund your study and living costs. Here's an idea about what you'll need to apply to StudyLink.

For all the details on the financial support available from StudyLink, go to [studylink.govt.nz/starting-study](https://www.studylink.govt.nz/starting-study)

Student Loans – Help you to pay for your course fees (the compulsory fees charged by your education provider), study materials (e.g. books, computer) and living costs.

Just remember it's a loan. You'll have to pay this back.

Student allowance – This is a weekly payment that can help with your living expenses while you are studying if you are eligible. You don't have to pay the money back BUT there are conditions.

You can apply for student loans and allowances online. Make sure you have:

- RealME account to apply online and access your My StudyLink
- RealME verified identity

The documents you'll need to provide for a RealME account include evidence of:

- who you are (birth certificate or passport)
- name change (if you've changed your name)
- your bank account number (verified)
- your IRD number.

If you're under 18 you'll need to supply some additional information.

The StudyLink eligibility test is part of the application process. This tells you what you may be eligible for. You'll need to provide the following information:

- Course details (including start and end dates and study break period)
- Citizenship/residency details
- Income information, if applicable
- Parents' income information (if you're under 24) If you have a child or you're over 24 and you have a partner you'll need to provide additional information. See the StudyLink website for more information
- IRD number and tax code

Parents: StudyLink can only give you information about *your* part of your child's application (e.g. your income evidence) unless they have appointed you as their agent.

www.studylink.govt.nz/starting-study/thinking-about-study/information-for-parents.html

www.studylink.govt.nz

0800 88 99 00

www.realme.govt.nz

0800 664 774

www.ird.govt.nz

0800 775 247



Parents:

StudyLink can only give you information about *your* part of your child's application (e.g. your income evidence) unless they have appointed you as their agent.



Eligible for fees-free?

Check the government website to see if you are eligible to get your first year of study fees-free!

www.feesfree.govt.nz

Halls of Residence

Wharepuni

Halls of Residence (also known as residential colleges) are typically for full-time first-year students. They provide a welcoming community to help you settle into university life.

You will pay rent for your room, and in most cases this will cover, food, power and internet costs. Halls are a great place to get academic support and get involved in social events.

Applications often open around August-September so you'll need to ensure you have all the documentation ready to submit an application. Places are limited.

In most cases, you'll also need to pay a 'bond' or 'deposit' if you accept an offer.

A deposit will often cover things like the bond, administration fees and activities fees. A bond is an advance payment that the Halls of Residence ask students to pay as security to cover any unpaid rent, or damage to the property.

Halls of Residence applications are interested in an applicant's academic achievements and personal qualities and attributes.

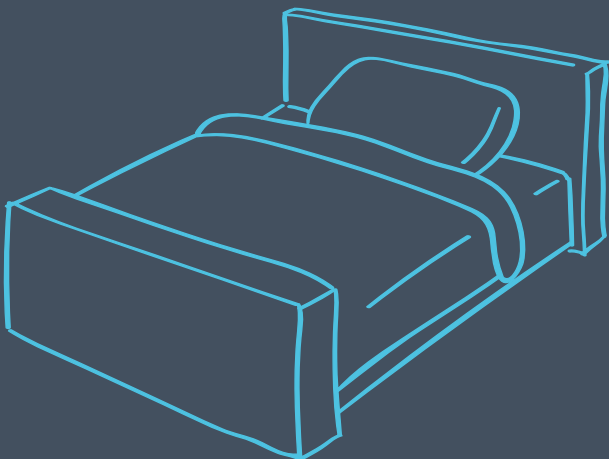
You may need to provide statements and information about the following as part of your Halls of Residence application:


- personal statement: academic achievements, leadership, sporting, cultural and community achievements and involvement
- statement about your study plans and ambitions
- list of accomplishments, awards, leadership positions
- academic results (e.g. NCEA record of achievement)
- a reference from your secondary school
- photo—head shot

Scholarships are sometimes available to help with Halls of Residence costs. Check out the universities' scholarship pages!

Accommodation

You may choose to flat rather than move into a Hall. The universities have Accommodation Offices that can help find a suitable property to rent. They can also provide information on costs, lease agreements and finding flatmates.





Halls of Residence are interested in an applicant's academic achievements, personal qualities and attributes.

A deposit will often cover things like the bond, administration fees and activities fees. A bond is an advance payment that Halls of Residence asks students to pay as security to cover any unpaid rent, or damage to the property.

Get more experience!

Me whakawhānui te wheako

Universities offer a range of opportunities for you to experience, connect and explore life as a student. When you're thinking about which university to attend, also look at the additional experiences on offer.



Study abroad and student exchange

Akoranga kei tawāhi

Experience and explore

Study abroad and student exchange programmes are an opportunity to explore and experience overseas study as part of your NZ degree.

- Earn credits towards your NZ degree
- Graduate with international experience
- Pay NZ tuition fees and, if you're eligible, continue to receive StudyLink loans or allowances (see StudyLink for more information).

Internships and work placements

Tūranga tauira

Connect

Internships and work placements are an opportunity to connect with industry, all as part of your study experience.

- Apply your learning to 'real-world' situations
- Develop valuable transferable skills
- Build your work history

Summer research scholarships

Karahipi Rangahau o te Raumati

Explore the world of academic research

- Gain valuable research experience
- Develop your research skills
- Work with leading researchers
- Enhance your career opportunities
- Prepare for the possibility of postgraduate study

Further information

To find out more about these opportunities use these 'keywords' to search the university website for more details.

[Study abroad](#)

[Internships](#)

[Summer research](#)

[Work placements](#)

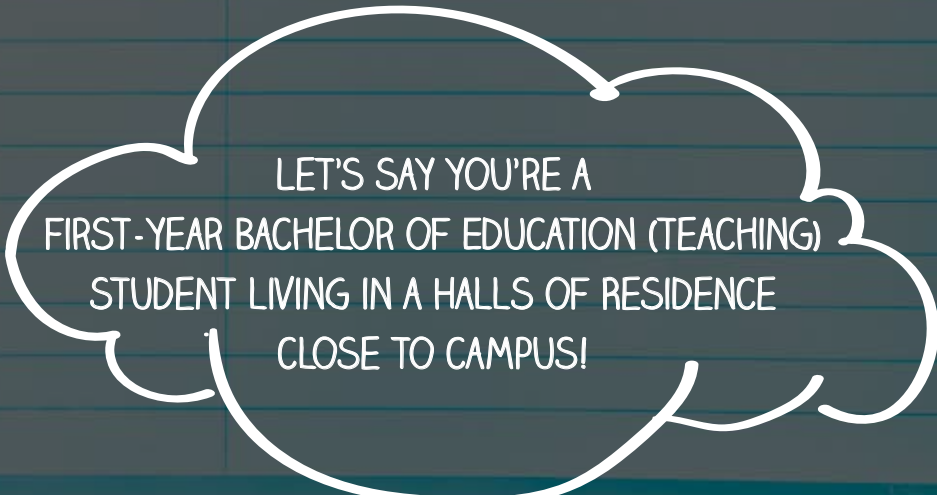
[Exchange](#)

[Summer scholarships](#)

Student life: a typical day

Te noho hei ākonga

To give you an idea of student life, we've put together what a typical day could look like!



LET'S SAY YOU'RE A
FIRST-YEAR BACHELOR OF EDUCATION (TEACHING)
STUDENT LIVING IN A HALLS OF RESIDENCE
CLOSE TO CAMPUS!

SEMESTER ONE SCHEDULE

Date _____



- 8AM:** WAKE UP, GET READY, AND GO TO BREAKFAST IN THE DINING HALL
- 8.45AM:** WALK TO CAMPUS, CATCH UP WITH FRIENDS
- 9AM:** LECTURE 1
- 10AM:** HEAD OFF TO YOUR TUTORIAL CLASS STARTING AT 10AM
- 11AM:** TUTORIAL DONE, TIME TO HEAD OFF TO THE GYM
- 12 NOON:** GO BACK TO THE HALL, SHOWER AND GRAB SOME LUNCH
- 12.45PM:** LECTURE 2 - GUEST LECTURE
- 2.45PM:** GRAB A COFFEE AND GET OVER TO THE STUDENT HUB TO WORK ON YOUR ASSIGNMENT
- 4.30PM:** RETURN TO HALL, MEET UP WITH FRIENDS AND CHILL BEFORE DINNER
- 6PM:** DINNER IN THE DINING HALL
- 7PM:** HEAD TO THE REC ROOM FOR THE HALLS 'MOVIE NIGHT'

*To do: register on Student Job Search website and find a job (www.sjs.co.nz)



A photograph of a man with a goatee and a mustache, smiling, holding a baby in his arms. He is also holding a laptop computer. The background is a blurred crowd of people. The entire image is overlaid with a dark blue tint.

Glossary

Kuputaka

100 level, 200 level, 300 level

There are three main levels at which undergraduate courses are offered by a university, 100 level being first-year, 200 level being second-year, and 300 level being third-year (often the final year of a bachelor's degree).

Admission Ad Eundem Statum

Ad eundem statum means "with equivalent status".

Domestic students who received their schooling in another country may be eligible for this admission based on their school-leaving qualification. As requirements vary such students should seek advice from the university they wish to attend.

This form of admission is also used for students who have studied in New Zealand and gained a university entrance equivalent such as the CAIE examinations or International Baccalaureate.

Approved subjects

To qualify for University Entrance, students must complete the required credits in approved subjects at NCEA Level 3. A list of approved subjects for the current year, as well as for previous years, can be found on the NZQA website.

Certificate

A coherent qualification at the pre-degree level of 60–120 credits, designed to provide a student with a basic tertiary level qualification in an area of study.

Certificate of Proficiency (COP)

A Certificate of Proficiency (also known as Individual Paper Credit) is not a qualification like a degree, diploma or certificate. The term is reserved for when a student wishes to take a course at a university without crediting it to a qualification. The reasons for doing so may be simply to pursue a personal interest, improve the chances of employment or make progress towards registration for a profession.

Co-requisites

A specified course that must be taken at the same time as another course, unless a student has already successfully completed it.

Course / paper

Usage varies but either term can refer to the smallest unit of work in which a student can enrol, identified by a unique code, and delivered by means of lectures, tutorials, seminars, etc. or in distance mode by correspondence or electronically. The length of a course is generally one semester.

Diploma

A qualification at the undergraduate or pre-degree level of 120 credits, which may build on defined prior qualifications or experience, of which at least 72 credits must be at the level assigned to the diploma.

Discretionary Entrance

Discretionary Entrance provides a route to university study for students who have not achieved University Entrance. The chief features of the regulations are as follows:

- They apply only to New Zealand or Australian citizens and permanent residents under 20 years of age.
- Applicants must have a minimum of 14 credits in an approved subject at Level 2 towards NCEA.
- Applicants must also have met the literacy and numeracy standards required for University Entrance.
- Application must be made to the university of choice and a fee may be payable.
- A reference from a school principal or another suitable person is required and there may be an interview.

Admission will be at the discretion of the university concerned, with the proviso that a student who has undertaken Year 13 study beyond 1 June at a NZ secondary school may normally not be admitted under the Discretionary Entrance provisions before July in the following year.

Distance education

An alternative to courses studied on-campus, courses studied by distance learning can be completed at home or in the workplace. Access to resources and student support are usually provided using internet-based media and digital technology. Some courses may include a brief period of on-campus attendance.

EFTS

Equivalent full-time students

Faculty / School / Department / College

A faculty is an academic section of a university dedicated to either a particular discipline (Faculty of Science), or several related disciplines (Faculty of Humanities and Social Sciences). Each faculty contains Schools and/or Departments – academic units that are responsible for teaching a particular subject (Department of Chemistry), or a collection of related subjects (School of Art History, Classics and Religious Studies). A Faculty may also be known as a College.

Foundation Courses, or Programmes

Foundation programmes provide the necessary skills and knowledge for students who do not meet minimum entry requirements for a university course, and help prepare students for university study.

Foundation Certificate

A qualification at the pre-degree level, with a total value of not fewer than 60 credits and not more than 120 credits*, which is designed to provide an introductory and coherent programme that encourages the student to undertake tertiary studies and/or equips the student with the skills needed to successfully attempt a tertiary level course of study.

**Students who have completed Year 13 at a secondary school may take a 60-credit certificate. Students who have completed only Year 12 must take a 120-credit certificate.*

Halls of Residence

Are normally for full-time students who typically stay for the full academic year. It's a type of accommodation. They provide a warm and welcoming community to help you make the most of your time at university.

Internships and work placement

An internship or work placement are usually temporary, and generally consist of an exchange of services for experience between the student and an employer.

Lecture

Lectures involve large groups of students and are the core teaching method in most courses.

Major / major subject

A substantial component of a degree (usually at least one-third and often consisting of one subject only) selected by the student, in accordance with the regulations, as the principal area of study for the degree.

Minor / minor subject

A component of an undergraduate degree, usually of at least 60 credits, in a subject area selected by the student, in accordance with the regulations, to formally recognise a secondary area of study for the degree. Minors need not be a compulsory component of a degree.

NCEA

The National Certificate of Educational Achievement is the national qualification system for secondary school students in NZ. It is administered by NZQA.

O Week

Orientation Week is a period, usually at the beginning of a semester, with the aim of helping new students settle in to their university. It is an opportunity to join clubs, meet new people, and learn some academic study skills.

Open Days

An opportunity for future students to visit the universities, explore different study options, tour the campuses and halls of residence, talk to current students, and get their first experience of student life.

Part-Time / Full-Time Study

A normal first-year workload is usually 120 points for full time students, or less than 96 points for part time students.

A qualification studied part time or full time involves the same work, but the part time qualification will take longer to complete.

Postgraduate course

Study at 400 level and above, undertaken after attaining a Bachelor's degree in the same or similar subject.

Prerequisites

A paper that must be completed successfully before being able to take another paper or course.

Programme

The requirements set down by a university, in the form of regulations, for the completion of a qualification, generally expressed in terms of eligibility to enrol, duration (years or credits), and the courses to be included, together with regulations covering matters such as practical work, cross-credits and exemptions, preparation and submission of a thesis etc. May also be used for a defined set of courses that do not lead to a qualification.

Also, used by some universities (a) as a synonym for major or (b) in reference to an individual student's selection from the requirements.

Qualification

A degree, diploma or certificate approved in terms of Section 253A of the Education Act 1989; or a degree, diploma or certificate approved by the Curriculum Committee of the University Grants Committee (disestablished 1990) or a degree, diploma or certificate offered by the University of New Zealand (disestablished 1961) and still on the books of the universities.

Satellite campus

A campus which is physically located at a different location to the main university campus.

Semester / Trimester

A period of approximately 15 weeks, of which 12 – 13 are teaching weeks, and the remainder vacation and examinations.

Special Admission

Persons over the age of 20 years, who are New Zealand or Australian citizens or permanent residents of either country, may enrol at a New Zealand university without having obtained a university entrance qualification. Further information is available from each university.

Student Union

The Student Union is a representative body that advocates for the interests of students within the university.

Subject

An academic discipline such as economics, anthropology, physics, offered through courses at various levels which are taken sequentially.

Tauira / Ākongā

A Māori word meaning student in this context. Ākongā can also be used to mean student or pupil.

Tutorial

Tutorials are facilitated by a tutor, involve smaller groups of students and are the forum for debating lecture topics, asking questions and seeking any help you need.

University Prospectus

This is a publication that contains specific detailed information about a particular university.

University Entrance Standard

The minimum standard required for entrance to a NZ University, established by NZQA, may be met in several ways (some of which are no longer available, but students who have met them are eligible to enrol at a university).

Some universities have adopted additional standards for entry, above the university entrance standard, for admission either to some or all their programmes. For more information, visit the universities' websites.

Undergraduate course

Study at 100 level to 300 level, such as a certificate, diploma, or Bachelor's degree.

Withdrawal date

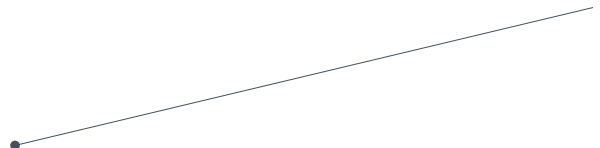
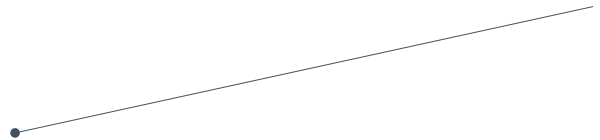
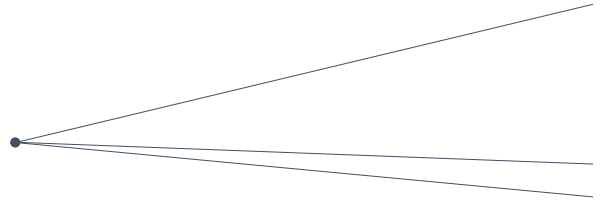
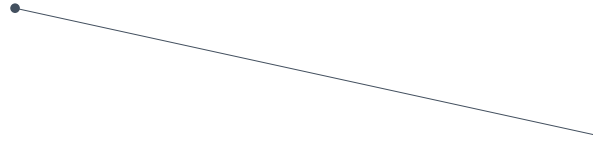
The date that you must withdraw from a course to be eligible for a refund of the course fees.

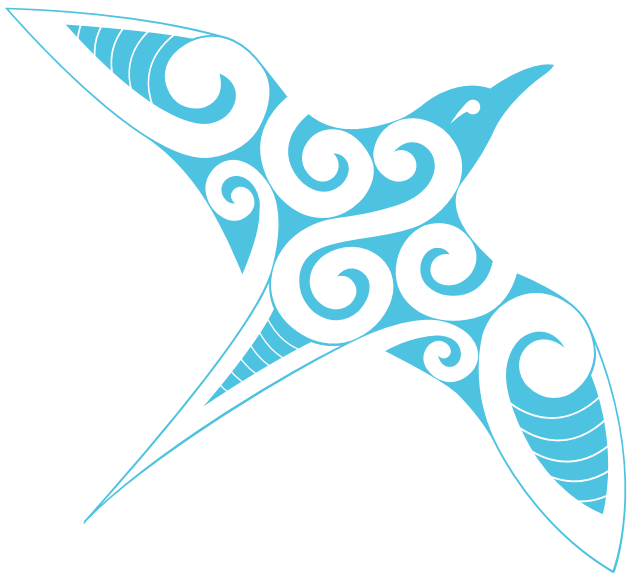
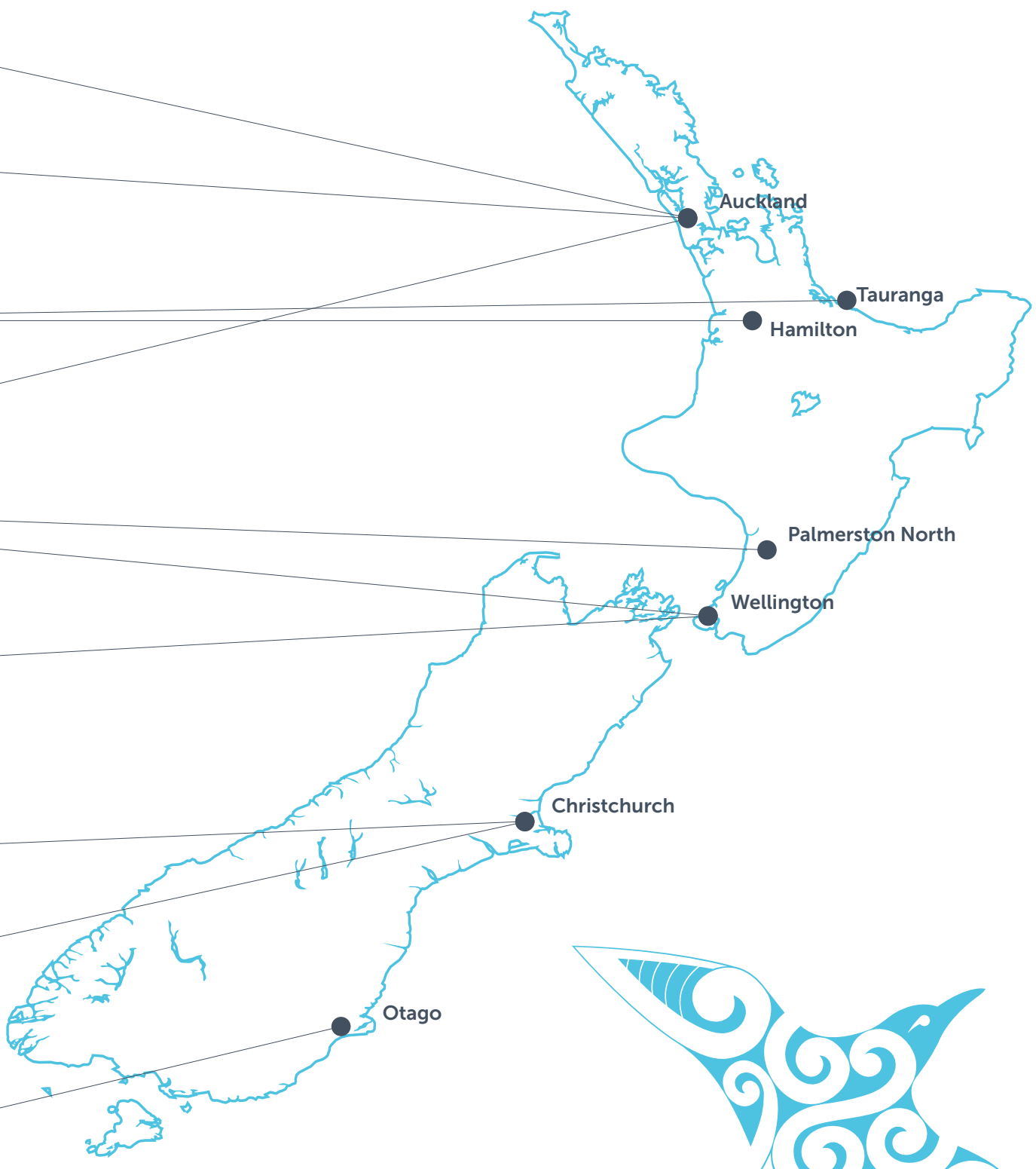
Whaowhia te kete mātauranga

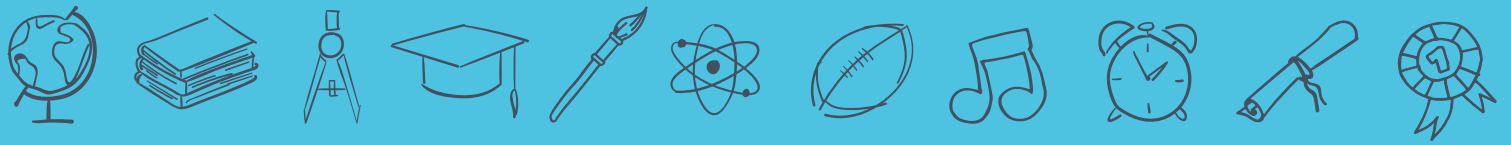
Fill the basket of
knowledge











Te Pōkai Tara
Universities
New Zealand

Universities NZ – Te Pōkai Tara
Level 9, 142 Lambton Quay, Wellington
PO Box 11915, Wellington 6142, New Zealand
Telephone: +64 (04) 381 8500

universitiesnz.ac.nz